

# LipSense Shades For Every Season

Here's how to choose your lip favourites for every part of the year!

We love lip colour. Like, really love it. According to a study performed by Statista, over 122 million women in the United States used lipstick or lip gloss. Just as we curate wardrobes around the changing seasons, we're also swapping out our favourite LipSense shades very few months.

Here are our recommended shades by season!

## Spring Lip Colours

Brighten things up with some fresh shades for spring. Get inspired by spunky hues that put a spring in your step!

### Everyday Lip Colour: Nude Honey LipSense

We love a warm, peachy nude for spring! Nude Honey LipSense keeps us warm through transitional weather, while complimenting any eye look



### Bold Lip Colour: Habanero LipSense

Habanero LipSense makes bold lips a breeze! If you're a red lip lover looking for a subtle yet spicy twist, this bright-orange red looks stunning with just mascara when running a quick errand or under a glittery gloss for a party-worthy look.

### Special Occasion Lip Colour: Amore LipSense

Spread a little love everywhere you go with Amore LipSense. Pair this stunning, pink-berry shade with berry-toned eye for a monochromatic moment.



## Sheer Sense

# Summer Lip Colours

Celebrate the warmest months of the year with red-hot, vibrant shades. See you in the sun!



## Everyday Lip Colour: Roseberry LipSense

Love understated shades, but still want to enjoy a summery lip? Try Roseberry LipSense. This matte rosy pink packs a nice punch to let your daily lip looks bring the heat.

## Bold Lip Colour: Rhubarb LipSense

It's the best time of the year to wear Rhubarb LipSense! With its perfect blend of red and pink and its stunning matte finish, it perfectly complements the sun-kissed, bronzy looks we love.



## Special Occasion Lip Colour: Blu-Red LipSense

Let your lip colour beat the heat with Blu-Red LipSense. This iconic shade stays put through barbecues, beach outings, fireworks displays, and heated matches of your favourite pool games.



# Fall Lip Colours

As you're reaching for chunky sweaters and your trusty boots, add some autumnal shades into your rotation. Here's what we're putting on our pout as the leaves begin to fall.

## Everyday Lip Colour: Nude LipSense

For an everyday fall lip colour, we have to tip our beanies to Nude LipSense, a soft chestnut brown. A hue like this is perfect for dressing up or down. It also lives up to its name as a true neutral shade.



Sheer Sense



### Bold Lip Colour: Fly Girl LipSense

While we love it all year round, we find ourselves loving on Fly Girl LipSense a little extra this season. This stunning, classic deep red has a warm undertone that keeps us happier than sparkling cider. Wear it for a fall date night, your Thanksgiving celebration, and everything in between!

### Special Occasion Lip Colour: B. Ruby LipSense

Burgundy, but make it purple! Enter B. Ruby LipSense for the best of both worlds! Plus, its vibrant satin finish makes it the shade to wear for any occasion.



## Winter Lip Colours

This season, you'll want to reach for deeper shades that celebrate the holiday season. Cheers!

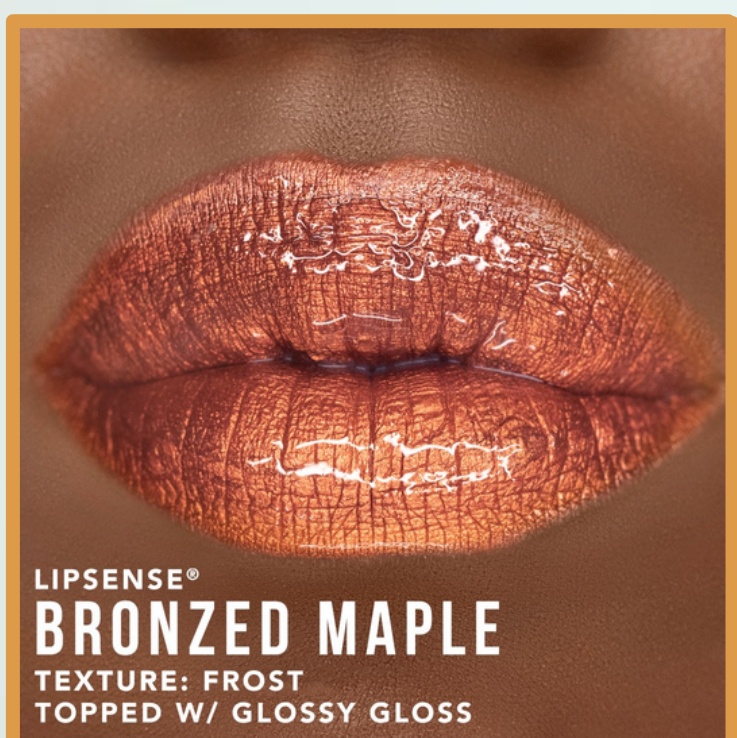


### Everyday Lip Colour: Hazelnut LipSense

When temperatures start to drop, we're wearing Hazelnut LipSense. This creamy, light brown is a true neutral shade, and its matte finish is perfect for whatever the winter days bring.

### Bold Lip Colour: Mulled Wine LipSense

We rely on the richness of Mulled Wine LipSense to keep us warm! This hue flatters all skin tones and it won't transfer onto your hot cocoa cup.



### Special Occasion Lip Colour: Bronzed Maple

Bronzed Maple LipSense is a rich, chestnut brown with metallic shimmer. We love pairing this hue with a striking gold eye for extra holiday cheer!

Sheer Sense